



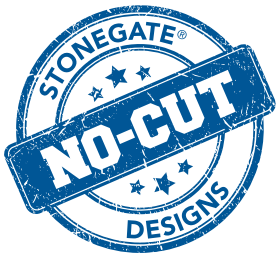
## STONEGATE® NO-CUT DESIGNS | FIREPLACES & GRILL STATIONS



**Stonegate No-Cut Designs** were developed to help contractors & distributors sell more projects.

- **NO CUT** fireplace and grill station designs
- **EFFICIENT:** Full pallet quantities (3 & 2 pallet designs)
- **LESS LABOR:** Installation is now a 2 person job
- **EASY:** Less experienced installers can easily master
- **INCREASE PROFITS:** Simplifies selling & build process



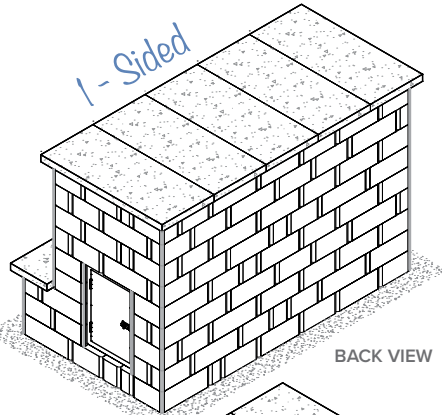


More **3-pallet**  
and **2-pallet** designs  
coming soon!

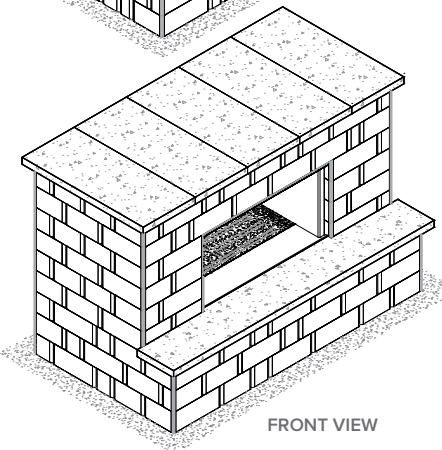
Every day homeowners are choosing Keystone's Stonegate units to turn their outdoor living dreams into realities. Help bring your customers' dreams to life, and increase your sales in the process, with grill station and fireplace Stonegate No-Cut Designs.

## FIREPLACE • 1-sided & 2-sided

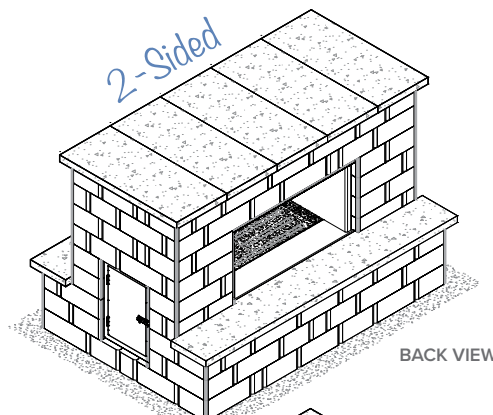
## 3-Pallet Designs



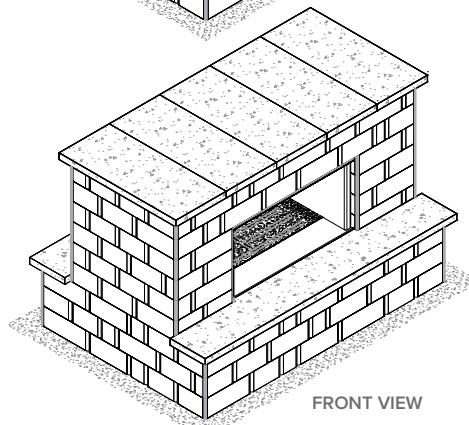
BACK VIEW



FRONT VIEW



BACK VIEW

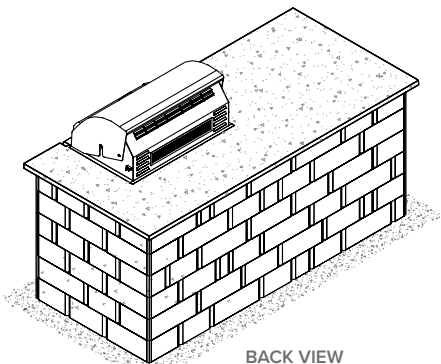


FRONT VIEW

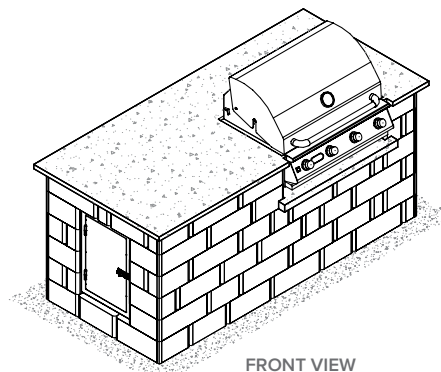
Sold Separately Fireplace insert, burner kit, access door, vents, hearth & top material - see **ACCESSORIES**

## STRAIGHT GRILL STATION

## 2-Pallet Design



BACK VIEW



FRONT VIEW

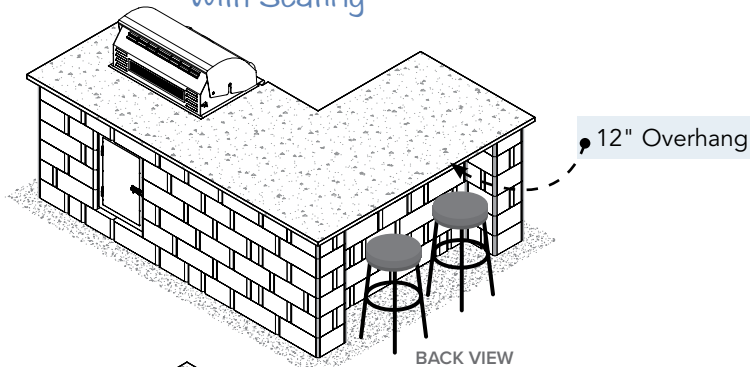
Sold Separately Grill head, access door, vents, counter top & filler material - see **ACCESSORIES**

**Notes:** Design and layout subject to change • Stonegate color may vary by location • Propane tanks not included.

## L-SHAPED GRILL STATION • With & Without Seating

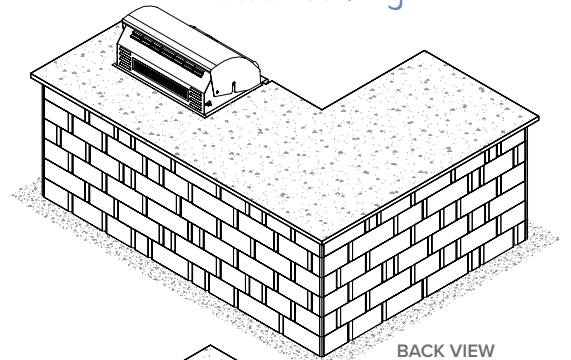
## 3-Pallet Designs

With Seating

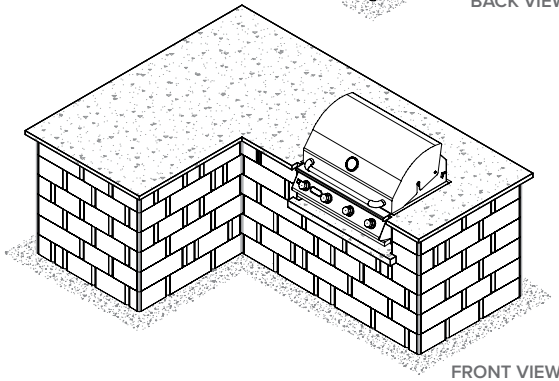


BACK VIEW

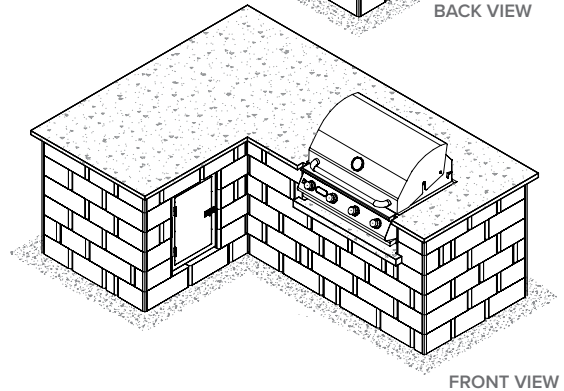
Without Seating



BACK VIEW



FRONT VIEW



FRONT VIEW

**Sold Separately** Grill head, access door, vents, counter top & filler material - see **ACCESSORIES**

Download step-by-step installation instructions from our website: [www.keystonewalls.com](http://www.keystonewalls.com)

## ACCESSORIES Sold Separately

### Fireplace Insert & Access Door Options

Manufacturer	Model	Description	Notes
RJ Thomas	RJT FPI-3	2-sided fireplace insert, black carbon steel	Discounts start at 6 units. Additional discounts for orders of 100+ units.
RJ Thomas	RJT FPI-4	1-sided fireplace insert, black carbon steel	
RJ Thomas	RJT FPI-D	Access door w/ 2 vents, black carbon steel	
RJ Thomas	RJT FPI-3/S	2-sided fireplace insert, stainless steel	
RJ Thomas	RJT FPI-4/S	1-sided fireplace insert, stainless steel	
RJ Thomas	RJT FPI-D/S	Access door w/ 2 vents, stainless steel	

Request a quote from RJ Thomas via; website [www.pilotrock.com/stonegate-certified-products](http://www.pilotrock.com/stonegate-certified-products), email [customerservice@rjthomas.com](mailto:customerservice@rjthomas.com) or call 800-762-5002

### Grill Heads Options

Manufacturer	Model	Description	Notes
Coyote	C2C34	Grill head; 32 in. block opening; counter cutout width 31 in.; fascia width 34 in.	Purchase from a local distributor of your choice.
Bull	Angus	Grill head; 32 in. block opening; counter cutout width 31 in.; fascia width 30½ in.	
Bull	Lonestar	Grill head; 32 in. block opening; counter cutout width 31 in.; fascia width 30½ in.	
Bull	Outlaw	Grill head; 32 in. block opening; counter cutout width 31 in.; fascia width 30½ in.	
Blaze	BLZ-4	Grill head; 32 in. block opening; counter cutout width 30-5/8 in.; fascia width 32½ in.	
AOG	30NBL/T	Grill head; 32 in. block opening; counter cutout width 30-5/8 in.; fascia width 31 in.	

### Fireplace Burner Kits

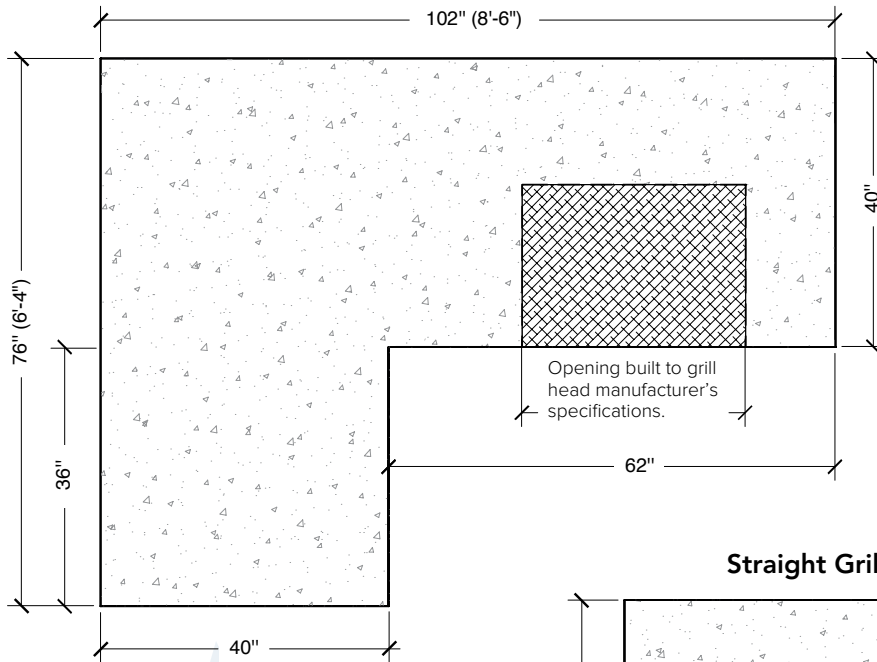
Manufacturer	Model	Description	Notes
HPC Fire Inspired	FPK/HBS30PS/ST-KIT	Stainless steel H-burner kit for 20 lb LP tank.	Rated at 120K BTU with gas inlet on the end to fit into your design.
HPC Fire Inspired	FPK/HBS30PS/LP-KIT	Stainless steel H-burner kit for hard pipe LP with flex-line	
HPC Fire Inspired	FPK/HBS30PS/NG-KIT	Stainless steel H-burner kit for hard pipe NG with flex-line	

To order from HPC Fire Inspired, email: [scd@hpcfire.com](mailto:scd@hpcfire.com).

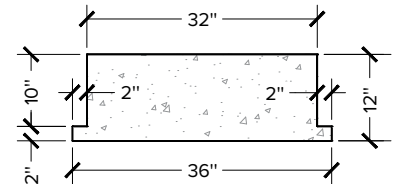


# ACCESSORIES Dimensions

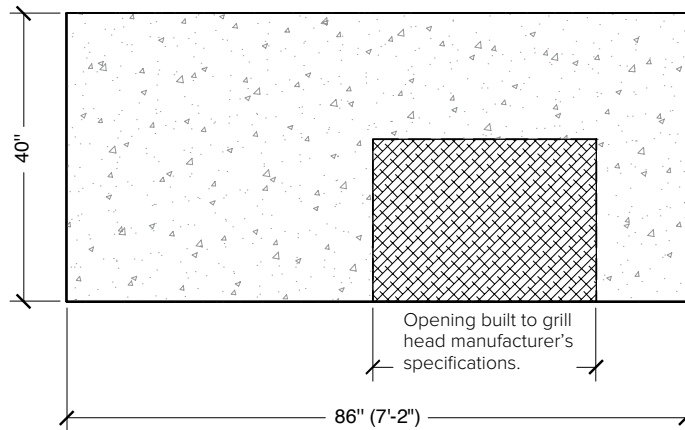
**L-Shaped Grill Station Counter Top**



**Grill Insert Concrete Filler Piece**

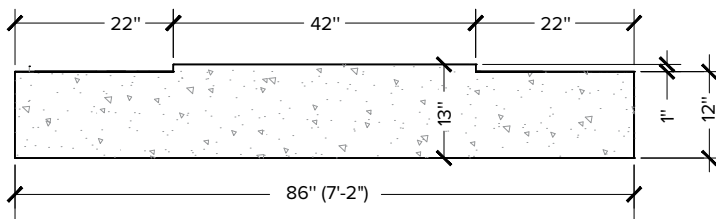


**Straight Grill Station Counter Top**

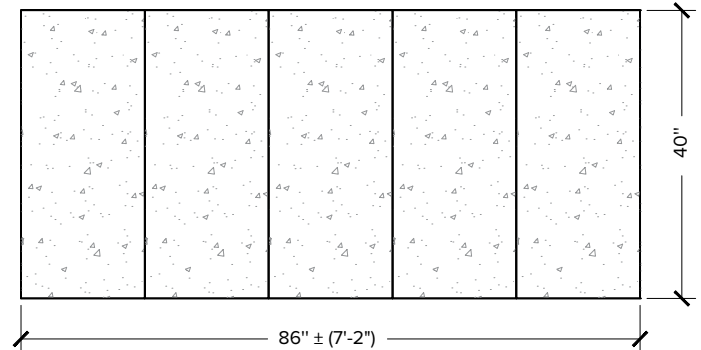


**Poured concrete or natural stone are great options for these accessories!**

**Fireplace Hearth**



**Fireplace Top**



Learn how to create concrete counter tops at [www.quikrete.com](http://www.quikrete.com)



[www.keystonewalls.com](http://www.keystonewalls.com)

©2020 The QUIKRETE Companies - Patents Pending. • KHS - 01/20